

Product Insert

50bp Plus DNA Ladder

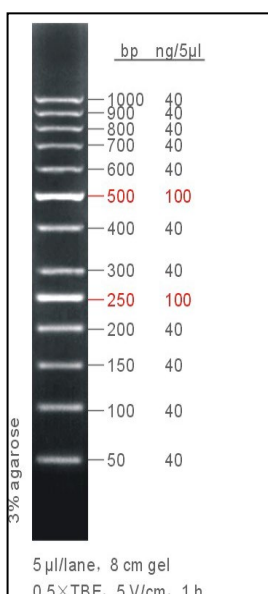
Cat. No.

EA22100 50ug (100Lane)

Shipping: On Dry/Blue Ice

Store at -20°C

50bp Plus DNA Ladder



Concentration: 128ng/μl

Recommended Loading

3-5 μl/Lane.

Concentration

Typical Bands 100 ng/5μl

Other Bands 40 ng/5μl

Recommended Electrophoresis Condition

5 μl/Lane, 8 cm 3 %Agarose Gel, 0.5xTBE, 5V/cm, 1h.

Contents (bp)

50, 100, 150, 200, **250**, 300, 400, **500**, 600, 700, 800, 900, 1,000

Storage

1 year at room temperature, for long-time preservation, please storage at -20°C .

Description

50bp Plus DNA ladder plus is ideal for determining the size of double-stranded DNA from 50 to 1000 base pairs. The ladder consists of 13 linear double-stranded fragments .The **250bp** and **500bp** fragment are present at increased intensity to allow easy identification. All fragments are precisely quantified and mixed during the production. For 5 ul loading, all fragments except 250bp and 500bp are 40ng. The 250bp and 500bp fragment are 100ng. This ladder is pre-mixed with loading dye and is ready to use.

Recommendations

Do not heat before loading.

For quantification, adjust the concentration of the sample to equalize it approximately with the amount of DNA in the nearest band of the ladder. Visualize DNA by staining with ethidium bromide or with SYBR® Green I.

Recommendations

Do not heat before loading.

For quantification, adjust the concentration of the sample to equalize it approximately with the amount of DNA in the nearest band of the ladder. Visualize DNA by staining with ethidium bromide or with SYBR® Green I.

Technical Support

If the troubleshooting guide does not solve the difficulty you are experiencing, please contact Technical Support with details of reaction setup, cycling conditions and relevant date.

Address : Woolim Lions Valley A-606B, 168, Gasan digital 1-ro, Geumcheon-gu, Seoul, Korea 08507

E.mail : info@philekorea.co.kr

Website : www.philekorea.co.kr

Tel. +82 2 2105 7020 +82 42 862 9636

Fax. +82 2 2105 7025 +82 42 862 9638