

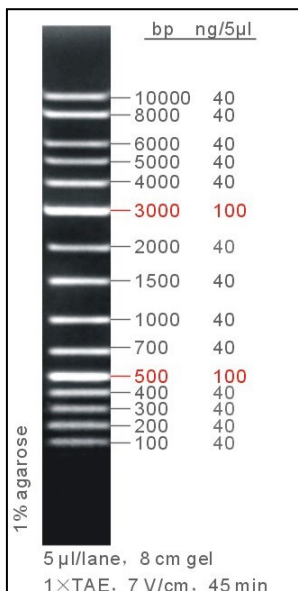
**Product Insert**  
**1kb Plus DNA Ladder**

**Cat. No.**

EA26100 50ug (100Lane)

Shipping: On Dry/Blue Ice  
Store at -20°C

**1kb Plus DNA Ladder**



**Concentration: 144ng/µl**

**Recommended Loading :** 3-5 µl/Lane.

**Concentration**

Typical Bands 100 ng/5µl  
Other Bands 40 ng/5µl

**Recommended Electrophoresis Condition**

8 cm 5%Agarose Gel, 1xTAE, 5 V/cm, 45min.

**Contents (bp)**

100, 200 , 300, 400, **500**, 700, 1,000, 1,500,  
2,000, **3,000**, 4,000, 5,000, 6,000, 8,000, 10,000

**Storage**

1 year at room temperature, for long-time preservation, please storage at -20°C .

**Description**

1kb Plus DNA ladder is ideal for determining the size of double-stranded DNA from 100 to 10,000 base pairs. The ladder consists of 15 linear double-stranded fragments .The **500bp** and **3,000bp** fragment are present at increased intensity to allow easy identification. All fragments are precisely quantified and mixed during the production. For 5 ul loading, all fragments except 500bp and 3,000bp are 40ng. The 500bp and 3,000bp fragment are 100ng. This ladder is pre-mixed with loading dye and is ready to use.

**Recommendations**

Do not heat before loading. For quantification, adjust the concentration of the sample to equalize it approximately with the amount of DNA in the nearest band of the ladder. Visualize DNA by staining with ethidium bromide or with SYBR® Green I.

**Technical Support**

If the troubleshooting guide does not solve the difficulty you are experiencing, please contact Technical Support with details of reaction setup, cycling conditions and relevant date.

Address : Woolim Lions Valley A-606B, 168, Gasan digital 1-ro, Geumcheon-gu, Seoul, Korea 08507  
E.mail : [info@philekorea.co.kr](mailto:info@philekorea.co.kr)  
Website : [www.philekorea.co.kr](http://www.philekorea.co.kr)  
Tel. +82 2 2105 7020 +82 42 862 9636  
Fax. +82 2 2105 7025 +82 42 862 9638

