

**Product Insert**

**6x Loading Dye**

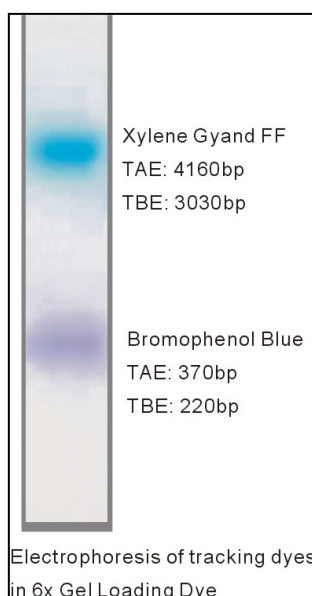
**Cat. No.**

EA27100 1 x 1mL

**Shipping: On Dry/Blue Ice**

**Store at -20°C**

**6x Loading Dye**



**Contents**

10 mM Tris-HCL (pH 7.6)  
0.03 % Bromophenol Blue  
0.03% Xylene Cyanol  
60 % Glycerol  
60 mM EDTA

**Application**

Preparation of DNA ladders, markers and samples for loading on agarose or polyacrylamide gels

**Description**

Gel Loading Dye (6X) is a pre-mixed loading buffer with two tracking dye for agarose and non-denaturing polyacrylamide gel electrophoresis. EDTA is included to chelate magnesium (up to 10 mM) in enzymatic reactions, thereby stopping the reaction. Bromophenol blue and xylene cyanol are the standard tracking dye for electrophoresis.

**Features**

Two-color tracking of DNA migration during electrophoresis  
No DNA masking during gel exposure to UV light  
EDTA binds divalent metal ions and inhibits metal dependent nucleases.

**Storage**

1 year at room temperature, for long-time preservation, please storage at -20°C .

**Quality Assurance Statement**

Gel Loading Dye (6X) is assayed for contaminating endonuclease, exonuclease and RNase activity

**Technical Support**

If the troubleshooting guide does not solve the difficulty you are experiencing, please contact Technical Support with details of reaction setup, cycling conditions and relevant date.

Address : Woolim Lions Valley A-606B, 168, Gasan digital 1-ro, Geumcheon-gu, Seoul, Korea 08507

E.mail : [info@philekorea.co.kr](mailto:info@philekorea.co.kr)

Website : [www.philekorea.co.kr](http://www.philekorea.co.kr)

Tel. +82 2 2105 7020 +82 42 862 9636

Fax. +82 2 2105 7025 +82 42 862 9638